

Tonight's Agenda

Open House - 7:00-7:15pm

- Visit educators & organizations:
 - CTrides, Watch For Me: Pedestrian Safety, HARTransit, NM River Trail Association
- Take our Survey

Presentation - 7:15-7:45pm

- Learn about Complete Streets

Visioning Workshop - 7:45-8:30pm

- Share your values and vision for New Milford
- Identify possible challenges

Wrap up - 8:30 – 8:45 pm

New Milford Complete Streets Public Information Workshop

May 01, 2018



Tonight's Agenda

✓ **Open House - 7:00-7:15pm**

Presentation - 7:15-7:45pm

- Learn about Complete Streets
- Have you taken our survey?

Visioning Workshop - 7:45-8:30pm

- Share your values and vision for New Milford
- Identify possible barriers

Wrap up - 8:30 – 8:45 pm

Broad Brush Strokes

What we'll cover

- Introduction to Complete Streets
- Why Complete Streets may be a good fit for your community
- Gather specific information to help shape the Master Plan

What we're not covering tonight

- How to finance projects
- Specific design standards or details
- Specific routes

We're coming back!

- Another public outreach event. Your input is needed!

Complete Streets Master Plan

Who is involved?

- Town of New Milford, with the assistance of AECOM
- Partner organizations and community stakeholders
- Started as a Sidewalk Master Plan



AECOM

What is a Complete Street Master Plan?

- A roadmap of improvement opportunities that are:
 - Easy to implement
 - Low cost with a high impact
 - Increases safety & accessibility through planning, design, maintenance and construction standards & recommendations
 - Assists Town Administrators in applying for grant money

Complete Streets Master Plan

How does a Complete Streets Master Plan assist the community?

- Input from residents and businesses
- Collaboration with key partner organizations and community stakeholders
- Integrates community goals and vision
- Allows for town administrators to apply for grant money
- Can leverage future public/private partnerships

When is this happening?

- Starts today (May 1st) with YOU! And will continue through the Summer of 2018

What are Complete Streets?

*“Complete Streets are a vital part of livable, attractive communities and are designed and operated to enable safe access for all users, including pedestrians, bicyclists, motorists and transit riders of all ages and abilities.”
(Smart Growth America)*

A promotional poster for the New Milford Art Walk 2018. The background is a teal color with faint, stylized illustrations of buildings. The text is arranged as follows: At the top left is the New Milford seal, a circular emblem with a tree and the text 'MILFORD 1707 CONNECTICUT'. Below it, the text reads 'SPONSORED BY THE NEW MILFORD COMMISSION ON THE ARTS' and 'DIRECTED BY LACEE YURTOGLU'. In the center, the dates 'AUGUST 11th & 12th | SATURDAY / SUNDAY' and '12-5pm' are displayed. Below the dates, it says 'FREE TO PUBLIC • RAIN OR SHINE'. The main title 'NEW MILFORD ART WALK' is written in large, bold, colorful letters (pink, yellow, and white) with a black outline. To the right of the title, the year '2018' is written in white. Below the title, it says 'AN INTERACTIVE COMMUNITY ARTS EVENT'. On the right side of the poster, the text 'Explore Local Artists' is written in a white, cursive font, with the hashtag '#NEWMILFORDARTWALK' below it.

AUGUST 11th & 12th | SATURDAY / SUNDAY
12-5pm
FREE TO PUBLIC • RAIN OR SHINE

NEW MILFORD
ART WALK
2018

AN INTERACTIVE
COMMUNITY ARTS EVENT

Explore
Local Artists
#NEWMILFORDARTWALK

MILFORD 1707 CONNECTICUT

SPONSORED BY
THE NEW MILFORD
COMMISSION ON THE ARTS

DIRECTED BY LACEE YURTOGLU

Complete Streets Promote

Health



Access



Safety



Economics

AECOM

Complete Streets for Rural Communities

There are Common Challenges

Agricultural Uses



Auto Oriented Roadways



Public Lands



Lack of Transportation Options



Complete Streets for Rural Communities

There are Common Challenges

Constrained Terrain



Safety



Highway as a Main Street



Climate & Maintenance



Complete Streets Approach

Proactive & Resourceful

- Look for opportunities to make improvements through maintenance, community projects, and development

Strategic Improvements

- Focus on relatively low cost, easy to implement, and high impact projects

No “One-Size-Fits-All” Solution

- Responds to community context
- Make travel safer and active in small and rural communities



Top: South Berwick, ME

Bottom: Derry, NH

Photo credit: Tony Cherolis,

Transport Hartford Academy Coordinator, 2018

Complete Streets for Rural Communities



Raised crosswalks
Shorter pedestrian crossing distances
Enhanced pedestrian crossing
Pedestrian island of refuge
ADA Tactile warning strips

Complete Streets for Rural Communities



Spring Cleaning? Students going to College? Donate your used bikes to the New Milford Youth Agency for its biennial **Bike Day**

Bike Donations now being accepted through June 22nd at the JPCC

Bikes are cleaned and repaired by New Milford Bike Express and Youth Agency volunteers

Drop off between 8:00am and 6:00pm



jason@youthagency.org

860.210.2030

2 Pickett District Rd

- Designated US Bike Route 7
- River Trail is a designated state greenway
- Teaching bike safety skills in your public school system
- Working with community stakeholders
- Conducted a Road Safety Audit

New Milford River Trail Association
is gearing up for...



April 24-25, 2018
Connecticut Community Foundation
www.GiveLocalCCF.org

This year our goal is to provide 15 bikes and helmets for New Milford High School's new Bike Safety Skills initiative!



COMMUNITY
connectivity program

Community Connectivity Program New Milford Road Safety Audit

New Milford Road Safety Audit (RSA)

Route 7 – Danbury Road

What is an RSA?

An innovative tool/process from the Federal Highway Administration that identifies:

- Safety issues
- Counter-measures

To help improve safety by a “Boots on ground” approach

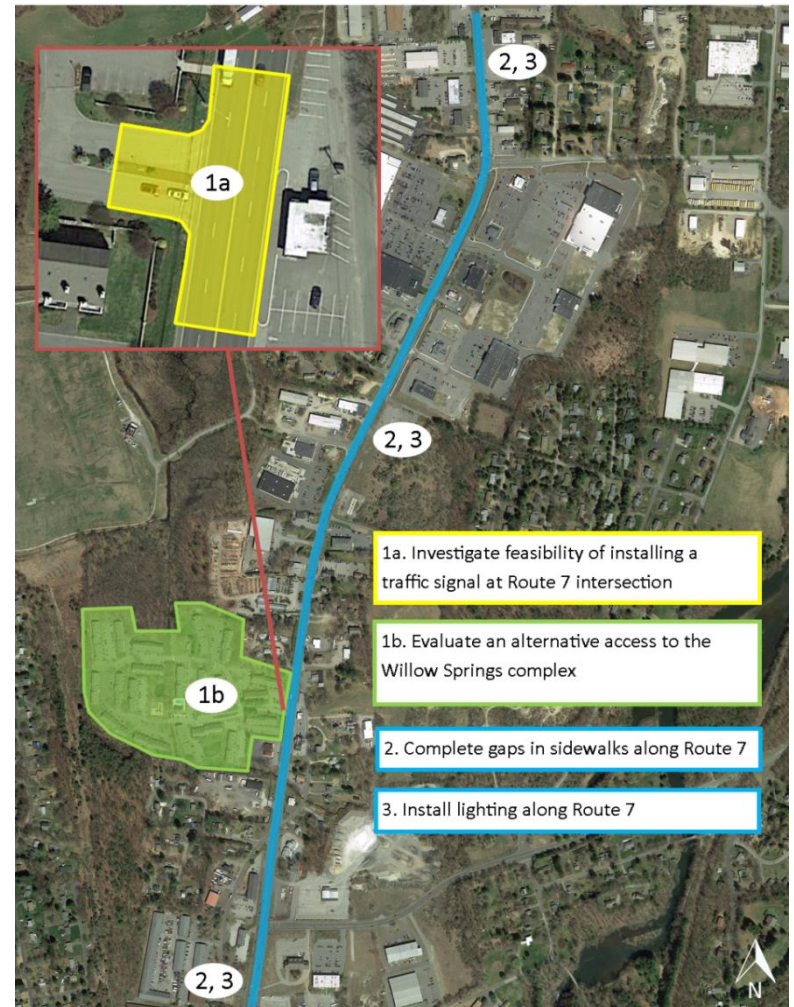
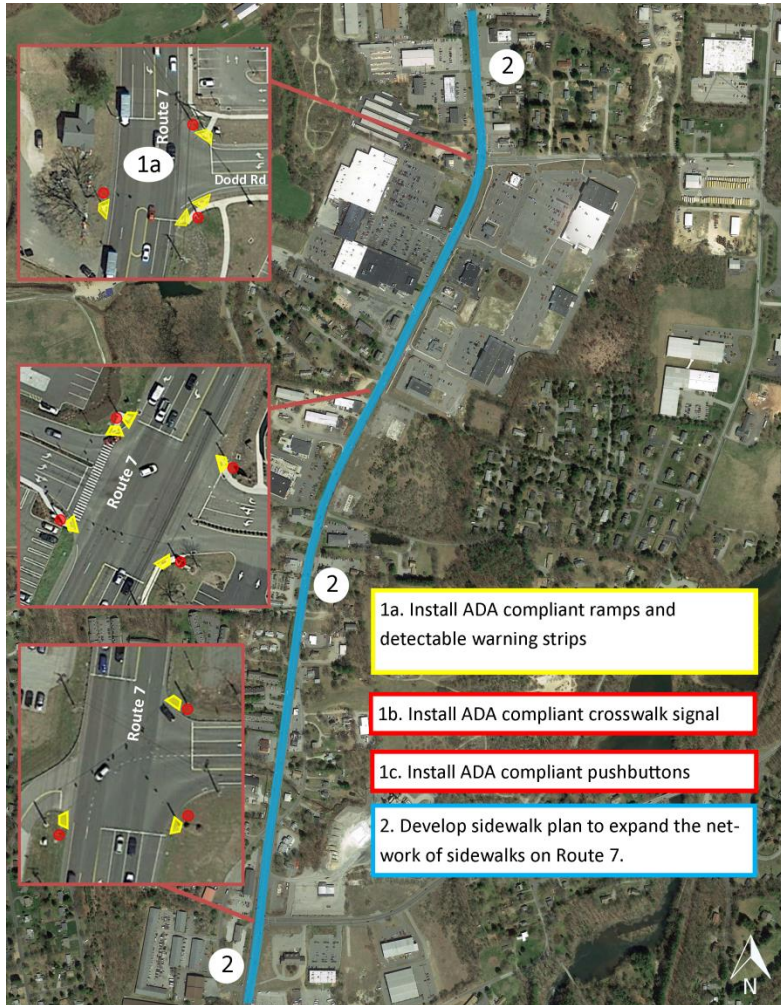
To help reduce crashes between vehicles and pedestrians/bicycles

Focus on locations that have non-motorized safety challenges



New Milford Road Safety Audit (RSA)

Route 7 – Danbury Road Recommendations



Let's Begin the Workshop!

The image features a white background with two thin, black diagonal lines that intersect to form a large 'X' shape. One line runs from the top-left towards the bottom-right, and the other runs from the top-right towards the bottom-left. The text 'Let's Begin the Workshop!' is centered horizontally and positioned in the upper-left quadrant of the image, partially overlapping the white space between the lines.

Tonight's Agenda

✓ **Open House - 7:00-7:15pm**

✓ **Presentation - 7:15-7:45pm**

Visioning Workshop - 7:45-8:30pm

- Share your values and vision for New Milford
- Identify possible barriers

Wrap up - 8:30 – 8:45 pm

Community Values Exercise

Hands-on activities to get involved and shape the plan

- May come up with multiple answers
- Must describe in one word

Present NM Streets = 3 min.

- What one word best describes New Milford Streets as they are in the present?

Future NM Streets = 3 min.

- What would you like to see New Milford streets have in the future?



Origin & Destination Mapping Exercise

Hands-on activities to get involved and shape the plan.

**12 minutes with each of the three (3) different map sets;
Pedestrian, Bicycle, Transit/Auto Networks**

Origin Locations 

Place a star shaped sticker in/around the location where you live

Destination Locations

- Green stickers = Where do you most frequent?

(Places you may not necessarily like to go – but have to, e.g. work, school, bank, doctor, recycling center, transfer station, gas station, supermarket)

- Red stickers = Where are the common barriers?

- Yellow stickers = Where/what are your favorite places to go?

- Blue stickers = Where/what are areas for improvement?

Wrap Up & Comments

The image features a white background with two thin, black diagonal lines that intersect to form a large 'X' shape. One line runs from the top-left towards the bottom-right, and the other runs from the top-right towards the bottom-left. The text 'Wrap Up & Comments' is centered horizontally and positioned in the upper-left quadrant of the page, partially overlapping the 'X'.

Thank You.

Stephen F. Mitchell, PE

Stephen.Mitchell@aecom.com

1-860-990-6755

Stephen A. Gazillo, AICP

Stephen.Mitchell@aecom.com

1-860-990-6755

Andrea A. Drabicki

Andrea.Drabicki@aecom.com

1-860 990-6822

Kevin M. Tedesco

Kevin.Tedesco@aecom.com

1-860 990-6739

AECOM

Imagine it.
Delivered.