

NOVEMBER 2024

NEW  
MILFORD  
SENIOR  
CENTER

# discover



## ABC FUEL OIL

NEW CUSTOMERS WELCOME!

**203-775-0221**

- Emergency Service
- Discount Fuel Oil Dealer
- Energy Assistance Program
- No Contracts Necessary

Family Owned And Operated  
Since January 2000 HOD #009

Office- 860.350.3801 Cell- 203.241.9300



**The Aiello Roofing Company**  
Roofing • Siding • Windows • Decks  
HIC 0641306  
theaiellorooftingcompany.com • aiellorooftingco@gmail.com

## Butter Brook Hill Apartments

105 Butterbrook Hill. New Milford, CT 06776

Apartments for seniors 62 years of age or older, or eligible disabled persons  
Funded by the U.S. Dept. of HUD's 236 Program

Rental assistance available for 40 units. Income limits and other eligibility criteria apply.

**For Information call: (860) 355-0814 TRS (800) 842-9710**



EOH



## LET'S GROW YOUR BUSINESS

Advertise in our Newsletter!

**CONTACT ME**  
**Bill Humphreys**

bhumphreys@lpicommunities.com

(800) 477-4574 x6634

## DOES YOUR NONPROFIT ORGANIZATION NEED A NEWSLETTER?

Engaging,  
ad-supported  
print and digital  
newsletters to reach  
your community.

Visit [lpicommunities.com](http://lpicommunities.com)



# Navigating Your Wellness, Together.

Serving New Milford and Surrounding Communities

Visiting Nurses  
In-Home Physical Therapy  
Parkinson's Center  
Palliative & Hospice Care  
Hourly & Live-In Aides  
Nutrition & Education

68 Park Lane Road, New Milford  
27 Governor Street, Ridgefield

203.438.5555  
RVNAhealth.org

**LEARN MORE**

**rVnaHEALTH™**  
For Lifelong Care & Wellness

Life-changing  
**hearing care**  
starts **here.**

Visit us for all your  
hearing-related needs.



**HearingLife**  
formerly **HEARING AID Specialists of CT**

337 Danbury Road, New Milford, CT

**860.799.4206**

Mention code **AG60-12** when calling.

Call today to schedule  
your **complimentary**  
hearing assessment\*  
and personal  
demonstration.

\*See office for details.



Ad info. 1-800-477-4574 • Publication Support 1-800-888-4574 • [www.lpicommunities.com](http://www.lpicommunities.com)

New Milford Senior Center, New Milford, CT

06-5288





NEW MILFORD  
SENIOR CENTER

40 Main Street ♦ New Milford, CT 06776  
Telephone (860) 355-6075 Fax (860) 354-2843  
Hours: Monday-Friday, 8:00 AM-4:00 PM  
Email: [senior@newmilfordct.gov](mailto:senior@newmilfordct.gov)  
Website: [www.newmilford.org](http://www.newmilford.org)

Click on "Departments" and select "Senior Center"



[www.facebook.com/  
NewMilfordCTSeniorCenter](http://www.facebook.com/NewMilfordCTSeniorCenter)



[www.agewellct.org/newmilford](http://www.agewellct.org/newmilford)

### SENIOR CENTER SUBCOMMITTEES

#### TRIAD for Senior Safety

Andrea Wilson, *Chairperson*

Nanette Bergin, *Secretary*

Ellen Tamburri, Catherine DeLuca, Heidi  
Bettcher, Atty. Michelle Liguori, Michael Gold,  
Lt. Lee Grabner, Kim Harrington

#### WHEELS Program of Greater NM

Carrie Lee Bunblasky, *Program Director*

Marianne Tarby, *Scheduler*

Kathy Granata, *Office Assistant*

Leo Ghio, Erin Baldwin,

Rui Anderson-Sousa, Jess Umbarger,

Shelley Scalzo, Eleanor Covelli, Thea Gruber

### COMMISSION ON AGING

Monthly Meetings take place every

Second Thursday at 3:30 PM

Gretchen O'Shea, *Chairperson*

Bob Bennett, *Vice Chairperson*

Mary-Ellen Foster, Atty. Michelle Liguori,

Holly Mullins, Geri Rodda,

Cecile Rooney, Jane Rush, Bonnie Weed

### HEALTH & WELLNESS PARTNERS

Alzheimer's Association

Housatonic Valley Health District

RVNA-New Milford

Nuvance Health

### SENIOR CENTER COMMUNITY CAFÉ

C&C Delicatessen of New Milford, *Elderly Nutrition Program Food Provider*

### NEW MILFORD SENIOR CENTER ENRICHMENT FUND

Monetary donations to benefit the New Milford Senior Center may be accepted through the newly established **New Milford Senior Center Enrichment Fund** which provides financial support for services, uplift, compassion, and scholarship for senior citizen programs and activities. Contributions are deductible for Income Tax purposes to the extent allowed by law. Municipalities are considered a qualified organization for said donations under the Internal Revenue Code-Publication 526, as long as use is for public purpose.

Town of New Milford, CT EIN: #06-6002046

### NEW MILFORD SENIOR CENTER STAFF DIRECTORY

**Jasmin Marie J. Ducusin-Jara**  
*Director of Senior Services*

**Janette Lynn Ireland**  
*Program Coordinator/Asst. Director*

**Marisa J. Levine**  
*Municipal Agent/Elder Advisor*

**RJ Yarrish**  
*Municipal Agent/Elder Advisor*

**Kim Fitch**  
*Office Coordinator/13b Clerical*

**Tom Williams**  
*Senior Center Bus Operator*

**Erin Baldwin**  
*Senior Center Bus Operator*

**John DeLaura**  
*Chore Services Coordinator*

**Sue Desgro**  
*Per Diem Sub Senior Center Bus Operator*

**Rufus de Rham**  
*Per Diem Sub Senior Center Bus Operator*

**Lori McNamara**  
*PT Seasonal Office Coordinator for MAs*

### FOR YOUR INFORMATION



### ELDERLY NUTRITION PROGRAM: CONGREGATE LUNCH SERVICE

**Monday - Thursday, 12:00 PM**

The Elderly Nutrition Program provides nutritionally balanced meals to individuals

60 years of age and over and their spouses with Congregate Lunch Service at the Senior Center! Lunch is prepared locally four days a week by food provider, C&C Delicatessen of New Milford. To make a reservation, please connect with the Senior Center at least 3 days in advance. Suggested donation per meal is \$5.00 which will help offset the cost of lunch services. All congregate in-house dining will follow the most current health and safety protocols. Lunch menus are on Page 14 of this newsletter and hard copies are available for pickup at the Senior Center. See you at the table!

### HOME DELIVERED MEALS: MEALS ON WHEELS

For seniors 60 years of age or older and of homebound status, meaning not able to access public places without assistance and not be able to drive, can qualify for home delivered meals with Meals on Wheels. Prepared meals are delivered to a person's home for individuals who are unable to prepare or obtain nourishing meals on their own. Western CT's Area Agency on Aging's home-delivered meal programs provide two meals a day and can be obtained anywhere from one to seven days per week depending on need. To apply or make a referral, please call the WCAAA at 800-994-9422 or 203-757-5449.

### TOP OF THE GREEN BOUTIQUE

Check out our handmade craft boutique featuring pieces made by our own senior community. All proceeds from these sales will benefit the New Milford Senior Enrichment Fund.



### DURABLE MEDICAL EQUIPMENT LENDING CLOSET



Did you know that the New Milford Senior Center houses a "lending closet" of durable medical equipment for donated items in clean + excellent condition for those in need? Connect with the Senior Center for further details, availabilities, or acceptable items for donation.

### THE LUNCH BUNCH

The Lunch Bunch is back and meets one Saturday a month to enjoy a new or favorite area restaurant. Join in for delicious local fare and friendships! Connect with the Senior Center for contact information.



### "ELSIE'S TRIPS" DAY TRIP INFORMATION

Day Trip information for "Elsie's Trips" are advertised in the Trip Book at the Senior Center. Stop by for flyers and contact info.

## 4 | FOR YOUR INFORMATION



### NMPL HOMEBOUND SERVICES

In keeping with its mission to provide access to books and other materials for the purpose of enriching their lives, the NM Public Library offers delivery and pickup of library materials to homebound New Milford residents. The library is pleased to partner with the Senior Center for delivery and pick-up services. Materials include but are not limited to books, magazines, DVDs CDs, audiobooks, and puzzles. For more information, please connect with the New Milford Library by calling 860-355-1191 x4216 or by visiting their website: [www.newmilfordlibrary.org](http://www.newmilfordlibrary.org) with links to the registration form.

### HELPING HANDS OF NEW MILFORD SENIOR CENTER VOLUNTEER MEETING

**Thursday, November 14th, 10:00 AM**

Looking for volunteer opportunities or do you simply just want to help make the New Milford Senior Center a better place? Join us as we look to gather new and returning Senior Center volunteers to learn of upcoming events, brainstorm new ideas, or seeing where your time and talents can be shared and appreciated!



### ELECTION DAY

Election Day will take place this year on Tuesday, November 5th from 6:00 AM - 8:00 PM. Please note that due to the closure of East Street School, District 2 voters will be now voting right here at the Senior Center. Transportation is available to all New Milford polling sites by connecting with the Senior Center.

PLEASE NOTE THAT THE  
NEW MILFORD SENIOR CENTER WILL HAVE NO  
ONSITE PROGRAMS/ACTIVITIES ON TUESDAY,  
NOVEMBER 5TH DUE TO ELECTION DAY AND WILL  
BE CLOSED ON THURSDAY, NOVEMBER 28TH AND  
FRIDAY, NOVEMBER 29TH FOR THANKSGIVING



Thanksgiving Greetings from  
all of us at the New Milford  
Senior Center! We are grateful  
for each and every one of you.

## HAPPENINGS IN THE COMMUNITY

### ODD FELLOWS SENIOR BREAKFAST

**Friday, November 22nd, 9:00 AM**

**Odd Fellows Hall—25 Danbury Road**

The members of Good Shepherd Odd Fellows Lodge #65 are welcoming the senior community for breakfast! Transportation available by connecting with the Senior Center. Thank you Odd Fellows for keeping up with this enjoyed tradition!



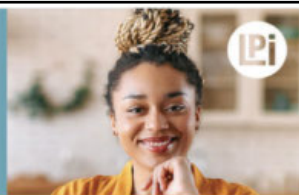
# THRIVE LOCALLY

## WE'RE HIRING!

**AD SALES EXECUTIVES**

BE YOURSELF.  
BRING YOUR PASSION.  
WORK WITH PURPOSE.

- Paid training • Some travel
- Work-life balance
- Full-Time with benefits
- Serve your community



Contact us at  
[careers@4lpi.com](mailto:careers@4lpi.com) or  
[www.4lpi.com/careers](http://www.4lpi.com/careers)



Specializing in 24/7 Live-In Care  
Homemaker/Companionship & Personal Care  
Meal Preparation  
Errands/Shopping  
Personal Hygiene Assistance  
Rewarding Companionship  
Respite Care for Families  
You Choose the Caregiver

**A FREE In-Home Consultation**



Serving Fairfield, Litchfield and New Haven Counties  
**Live-In Care Available Statewide!**

[Visitingangels.com/brookfield](http://Visitingangels.com/brookfield)

**203-740-0230**

CT Reg. #HCA 0000630

Screened, Bonded & Insured

**Serving the Local Community for Over 20 Years!**



Ad info. 1-800-477-4574 • Publication Support 1-800-888-4574 • [www.lpicommunities.com](http://www.lpicommunities.com)

New Milford Senior Center, New Milford, CT

06-5288





## INTERGENERATIONAL CONNECTIONS

**Wednesday, November 6th, 10:30 AM**

Join us as we welcome little friends from the Children's Center for intergenerational fun through games, and activities! To sign up, please connect with the Senior Center.

## NEVER STOP LEARNING!

### AMERICAN SIGN LANGUAGE 101

**Mondays, November 4th and 18th, 10:30AM**



Your instructor, Mary Silvestri, is a retired teacher of the Deaf/Hard of Hearing and is Deaf herself. In this class, students will communicate ONLY in American Sign Language (ASL) with their classmates. To have more fun and fully

immerse in the experience, no talking will take place in class. Connect with the Senior Center to sign up.

### TORRIES, SPIES & TRAITORS-DIVIDED LOYALTY IN REVOLUTIONARY CONNECTICUT

**Tuesday, November 19th, 1:00 PM**



*Which side are you on?* That's the question that every single person in Connecticut had to answer in 1775, as the thirteen colonies began a rebellion against British rule. Loyalty was not only a matter of words or opinion. For soldiers and civilians alike, loyalty could mean loss of fortune, of friends, and even of life. This presentation reveals stories – some well known, some obscure – of Nutmeggers who risked and sacrificed to support their chosen side during this “tumultuous jarring time of civil war.” Join us as we welcome The Connecticut Museum of Culture & History for this special presentation. Connect with the Senior Center to sign up.

### CARTOON CLASS—A BASIC DRAWING CLASS

**Thursdays, 10:00 AM**

Learn drawing skills and develop your creative ability with local cartoonist, Vic Consaga. Materials will be provided, but if you would like to bring your own, the materials needed are a 9" x 11" tracing pad, No.2 pencils, pencil sharpener, and a soft eraser. No prior experience needed, but space is limited so to sign up, please connect with the Senior Center.



### TECH SAVVY SENIORS

**Wednesdays starting November 6th, 10:00 AM**

How do I make my iPhone louder? Can my iPad let me read a book? How do I get music on my apple devices?

Can I take photos and videos and send them to my friends and family? Join us as we welcome instructor, Lindsey Burk to help you become a Tech Savvy Senior! Bring your iPhone or iPad and learn how to use it more efficiently and discover things you had no idea it could do! Please note that You MUST own an iPhone or iPad for this class and also bring/know your Apple ID and Password. Space is limited! Please connect with the Senior Center to sign up.

## SAVE THE DATE!

### HOLLY JOLLY HOLIDAY PARTY

**Friday, December 20th, 12:00 PM (Tickets \$20.00)**

Join us for a little bubbly and good cheer to toast the holidays and New Year! Lunch by C&C Deli and entertainment by the Esperanto Duo. We have decked the halls, now all we need is you! Tickets on sale Nov. 19th

## GOOD TO KNOW + SPECIAL PROGRAMS

| 5

New Milford Senior Center Presents

# Luncheon & Musical Tribute to our Veterans

**TUESDAY, NOVEMBER 12TH**  
**12:00PM-2:30PM**

**MUSIC BY THE HAPPY TRAVELERS**

Please be sure to sign up for both lunch and the tribute.  
Connect with the  
**New Milford Senior Center**  
for more information or to register.

The New Milford Senior Center Presents

# THANKS FOR GIVING

**THANKSGIVING LUNCH & VOLUNTEER APPRECIATION DAY**

**Thursday, November 21st**  
**12PM-2:30PM**

Let's join together in fellowship and to give thanks to our **AMAZING** volunteers!

**YOU MUST REGISTER FOR LUNCH BEFORE NOVEMBER 18TH**

**CONNECT WITH THE NEW MILFORD SENIOR CENTER AT 860-355-6075**



### BRAIN GAMES LUNCH & LEARN

**Friday, November 22nd, 1:00 PM**

Join us as we enjoy lunch and work our brains games with our friend, Danielle Ramos from Village Crest! To sign up, please connect with the Senior Center.

## MARISA J. LEVINE & REBECCA (RJ) YARRISH MUNICIPAL AGENT FOR THE ELDERLY/SENIOR SERVICE ADVISORS

Our Municipal Agents/Senior Service Advisors are available for appointments at the Senior Center, home visits and may be also contacted by phone and email.

### SERVICES AVAILABLE TO NEW MILFORD RESIDENTS AND THEIR FAMILIES ONLY

- Information and Referrals • Housing Options • Prescription Drug Plans • Energy Assistance • Renter & Tax Rebates •
- Medicaid • Medicare and Supplemental Plans • Medicare Advantage Plans • Long Term Care Planning and Insurance •
- Social Security Counseling • Meals On Wheels • Home Care Options • Life Line • Financial Hardship • Transportation •
- Title 5 Senior Employment Options • Chores • Elderly Nutrition/SNAP/Farmers Market Coupons •
- Volunteer Opportunities • Support Groups •



The mission of New Milford Chore Services is to assist senior residents of New Milford with heavy chores work so that they are able to remain living independently and with dignity, at home. *We assess work on a case by case basis, but here are some examples of how we might be able to help:* Trim hedges, rake leaves,

weed the garden, wash windows, spring cleaning, decluttering, rearrange furniture, switch out screen/storm windows, change lightbulbs, or even tighten screws. The New Milford Chore Services program is funded through federal and state grants and donations based on a sliding scale of client fees. If you think we might be able to help, please connect with the Senior Center to complete the required paperwork to begin service inquiry or if you are interested in volunteering for Chore Services as we are always looking for those who want to lend a helping hand!

### MEDICARE OPEN ENROLLMENT

Upcoming Medicare Open Enrollment You can join, switch, or drop a Medicare Health Plan or a Medicare Advantage Plan (Part C) with or without drug coverage during these times:

**Open Enrollment Period.** From October 15 – December 7, 2024 each year, you can join, switch, or drop a plan. Your coverage will begin on January 1 (as long as the plan gets your request by December 7).

**Medicare Advantage Open Enrollment Period.** From January 1 – March 31, 2024 each year, if you're enrolled in a Medicare Advantage Plan, you can switch to a different Medicare Advantage Plan or switch to Original Medicare (and join a separate Medicare drug plan) once during this time. **Note:** You can only switch plans once during this period. For more info or to request an appointment, connect with the Senior Center.



Get alerted about emergencies and many other important community news by signing up for the Town of New Milford's Emergency Alert Program. To sign up, go to the Town of New Milford home page at [www.newmilford.org](http://www.newmilford.org) and scroll down to the bottom of the home page and click the "Notify New Milford" icon. For questions, please call the Mayor's Office at 860-355-6010 or email the Mayor's Office at [mayor@newmilfordct.gov](mailto:mayor@newmilfordct.gov)



### SENIOR CENTER ARPA FUNDS

The Senior Center has received ARPA (American Rescue Plan Act) Funds to assist New Milford households who were financially impacted by COVID-19. Applications are available at the Senior Center or in the Senior Center

section of the Town of New Milford's website: [www.newmilford.org](http://www.newmilford.org). There is no income limit to applying, however, proof of residency and financial impact are required. Grants are limited. Applications and supporting documentation must be sent to the New Milford Senior Center at 40 Main St New Milford, CT 06776 for review and consultation. For

### CAPITAL HOME IMPROVEMENT PROGRAM

The Town of New Milford has made a portion of its American Rescue Plan funds available to income-eligible residential property owners impacted by the COVID-19 pandemic and needing home repairs. Types of work that may be eligible for funding include the correcting of health and safety violations, code compliance, roofing, carpentry, electrical work, painting, plumbing, heating and other non-luxury work subject to the approval of the Town and Program Manager. Eligibility, instructions, and applications are available at the Senior Center.



### ENERGY ASSISTANCE (CEAP)

**Application Period:** We are making appointments for applications for deliverable fuels (oil, propane, and kerosene) at this time. The first day energy assistant clients can receive a delivery is around November 1st. Generally, electric heated households are scheduled for appointments beginning in November.

**Eligibility Requirements:** Income and asset guidelines are subject to change, but you may connect with the Senior Center for the most up-to-date figures for this season.

**Documents required:** Current income from all sources (social security, pensions, work, interest and dividends, etc.) current assets, (bank statements from all bank accounts, stocks, bonds, IRAs and CDs) and a current electric bill.

For more information or to make an appointment, please connect with the Senior Center.



### NEW MILFORD FOOD BANK THANKSGIVING BASKET

Senior Food Bank Participants are reminded to sign up for the Thanksgiving Basket that you can use to prepare your own Thanksgiving meal by connecting with the Food Bank at Social Services at 860-355-6079 or in person when the Food Bank is open. Last day to sign up is Friday, November 1st. Details about pickup will be available at the Food Bank.

### HOME-DELIVERED THANKSGIVING MEAL

As a generous and caring service to the community, the Odd Fellows Lodge #65 will be offering made-with-care Thanksgiving meals for those who would appreciate a turkey dinner with all the fixings for Thanksgiving. These meals will be delivered to your home on Thanksgiving Day, November 28th. There is no charge for these meals, but donations are always appreciated to continue the good works of the Odd Fellows Lodge. To sign up, please connect with the Senior Center by Friday, November 15th. Happy Thanksgiving!

### WITH THE UPCOMING HOLIDAY SEASON...

### SANTA FOR SENIORS AND GRANDPARENT GIVING

Santa for Seniors and Grandparent Giving are holiday programs that will provide a gift/s of need to qualifying New Milford seniors. Those interested for consideration must complete the registration form(s) available at the Senior Center for review by the Municipal Agents by Friday, November 22nd. Connect with the Senior Center for more information.



### COMMUNITY FUEL BANK OF NEW MILFORD

Please consider making a donation to the Community Fuel Bank of New Milford. The Community Fuel Bank is a special fund shared by the Senior Center and Social Services to aid New Milford families in need with heat in their home. Donations are accepted either on the "Senior Center" page

at [newmilford.org](http://newmilford.org) or by mail: Community Fuel Bank 40 Main Street New Milford CT 06776 with checks made payable to *Community Fuel Bank of New Milford*.

### NEW MILFORD COMMUNITY CONNECT

The Town of New Milford Fire Marshal's Office announces the launch of Community Connect, a community risk reduction platform developed by First Due. The platform empowers first responders with critical life-saving information, and facilitates mass notifications of residents with essential health and life-safety preventative messaging. Community Connect not only enhances the safety of the New Milford community but also promises efficient emergency response, ensuring the improved well-being of all residents. User data is strictly used for response purposes or emergency planning, reinforcing the platform's commitment to user privacy and safety. Users can create personalized residential and business health and life safety profiles, which lead to a more efficient and tailored response from emergency services when required. For more information about Community Connect and to create your profile, visit <https://www.communityconnect.io/info/ct-newmilford>. You can also call the Fire Marshal's Office at 860-355-6099 or email [firemarshal@newmilfordct.gov](mailto:firemarshal@newmilfordct.gov) with questions.



### SUPPORT GROUPS

#### CAREGIVER SUPPORT GROUP

**Thursday, November 7th, 1:00 PM**

Are you a caregiver seeking a compassionate and supportive community? We invite you to join our monthly caregiver support group, where an RVNA health professional leads meaningful discussions and provides valuable insights. In these gatherings, you can connect with fellow caregivers, share your unique experiences, and find the empathy and understanding you deserve. Every first Thursday of the month, we come together to offer emotional support, exchange information, and collaboratively address common caregiving challenges. For questions, more information or to sign up, please connect with the Senior Center.



#### BEREAVEMENT SUPPORT GROUP

**Friday, November 8th, 10:00 AM**

Bereavement support groups allow participants to process their grief, share and receive helpful advice, and create a community with others walking in similar paths. Join us as we welcome

Garret Walkup, RVNA health Manager of Bereavement, Social Work and Pastoral Care Services and receive emotional support, validation and understanding, coping strategies, community and connection, and healing and recovery. For more information or to sign up, please contact Garrett Walkup at 475-529-6118 or [gwalkup@rvnahealth.org](mailto:gwalkup@rvnahealth.org) or connect with the Senior Center.



## 8 | HEALTH AND WELLNESS

### INTEGRATED FITNESS

**Thursday, November 14th, 10:45 AM**



Enjoy functional movement and playful content promoting body and mind strength and flexibility, core strength and balance, cardio vascular health, brain function and elasticity, and mental well-being. Movement activities are adaptable for most mobility levels and participants are invited to stand or sit as needed at any time during the class. For curious and creative adults. "So much fun it doesn't feel like exercise!" Presented by Circus Moves. This class offering is made possible by Senior Center ARPA allocations and is free of charge for participants. Space is limited so to sign up, please connect with the Senior Center.

### REIKI HEALING \*PLEASE NOTE NEW TIME\*

**Tuesdays, Nov. 12th and 26th, 2:00 - 3:00 PM**

Reiki is used to reduce stress, promote relaxation, and restore physical, mental, and emotional health through simple hands-on healing techniques with Reiki Master, Mary-Ellen Foster every second and fourth Tuesday of the month. A 10 minute Reiki Healing session is a suggested donation of \$7.00 and clients are received on a first come, first served basis.



### TAI CHI FOR SENIORS Wednesdays, 1:00 PM

Join Tai Chi Instructor, Sasha Chalif as you learn this gentle way to fight stress while also helping to increase flexibility and balance. Movements can be modified to be practiced in both standing and seated. This class will be taught in four-week sessions and is made possible by the Senior Center ARPA allocation and free of charge but space is limited so to sign up, please connect with the Senior Center. Embrace your mind, body, and spirit!



### BLOOD PRESSURE SCREENINGS

**Wednesdays, 10:30 – 11:30 AM**

Join us for a weekly, first come, first serve blood pressure screening with an RVNA Nurse. This free service provides you with an opportunity to check and track your blood pressure as well as meet with a nurse for basic health questions and guidance.



### HEALING WITH SOUND Fridays, 1:00 PM

Do you want to explore sound as a way to relax and have fun? Would you like to learn some sound exercises to reduce stress and improve positive thinking? Join us as we welcome Barbara (Bobbi) Soares of Hummingbird Sound Yoga and experience Hummingbird's medicine that teaches you to listen and be deeply in the present moment. This class offering is made possible by Senior Center ARPA allocations and is free of charge for participants. Space is limited so to sign up, please connect with the Senior Center.



### HEALTHY CHATS & BREAKFAST SNACKS: GRIEF, HEALING, AND THE HOLIDAYS

**Wednesday, November 13th, 9:30 AM**

Garrett Walkup of RVNA will guide us in navigating our grief during the holiday season. Understanding how sadness affects you, and finding ways to remember your loved ones can help restore a sense of balance through this time. Breakfast snacks are generously sponsored by Synergy Home Care and Village Crest. Connect with the Senior Center to sign up.



### HEARING SCREENINGS

**Tuesday, November 12th, By Appointment**

Free Hearing Screenings will be available right here in our Health & Wellness Room in partnership with our friends from Hearing Life, formerly Hearing Aid Specialist of CT. Please connect with the Senior Center to set up an appointment.



### ALZHEIMER'S ASSOCIATION

The Alzheimer's Association is available with resources, advocacy, and advice. For more information, please contact the Alzheimer's Association at **1-800-272-3900**. A representative of the Alzheimer's Association can be available for questions/information by appointment.

### SUPPORT GROUP FOR THOSE LIVING IN THE EARLY STAGES OF ALZHEIMER'S DISEASE AND ALL OTHER DEMENTIAS

Presented by the Alzheimer's Association of Connecticut, build a support system with people who understand. Alzheimer's Association® support groups, conducted by trained facilitators, are a safe place for people living with dementia and their care partners to: develop a support system; exchange practical information on challenges and possible solutions; talk through issues and ways of coping, share feelings, needs; and concerns; and learn about community resources. Pre-registration is required to attend by contacting Amanda Lamb-Moretti at 860-383-2667 or by email at [aklambmoretti@alz.org](mailto:aklambmoretti@alz.org). This group will meet every last Friday of the month. Visit [alz.org/ct](http://alz.org/ct) to learn more about caregiver programs and resources. To further extend your network of support, visit [ALZconnected@](mailto:ALZconnected@), our online community, at [alzconnected.org](http://alzconnected.org)

### CONNECTICUT STATEWIDE RESPITE CARE PROGRAM



Are you caring for someone with a diagnosis of Alzheimer's Disease or dementia? Are you burnt out? Overwhelmed? Run down? In need of relief? If so, you may be eligible for the CT Statewide Respite Care Program, funded by the State Unit on Aging, in partnership with the Alzheimer's Association, Connecticut Chapter, and the Connecticut Area Agencies on Aging. For more information, please connect with the Western Connecticut Area Agency on Aging (WCAAA) at 203-757-5449.

Help is 3 Numbers Away





**UNTIL FURTHER NOTICE, PLEASE BE ADVISED THAT OUR SENIOR TRANSPORTATION SERVICES WILL CONTINUE TO ADHERE TO THE GUIDANCE OF MASKS OPTIONAL BUT STILL STRONGLY ENCOURAGED. WE THANK YOU FOR YOUR COOPERATION.**



### RESERVATIONS AND RIDERSHIP

Transportation is available for seniors and individuals who are ADA-certified to head to the Senior Center, work, shopping, and anywhere within New Milford. To reserve a ride, please call the Center at **860-355-6075** a minimum of three days before you need transportation and you will receive a phone call the afternoon before your bus ride (Friday afternoon for Monday rides), for confirmation and

your pickup time. We require at least 24 hours notice for a change in destination as all "stops" are scheduled accordingly. We ask that bus riders be ready at least 15 minutes before your scheduled pickup time! When you are finished with your appointment and/or have been waiting for more than 15 minutes for your ride, please call the Center. All walkers and canes must be secured and wheelchairs will be secured in appropriate locked positions while onboard the bus. For the safety of yourself and others, please limit yourself to bringing no more than 3-reasonably sized bags of groceries or other goods/belongings that can be easily stored at your feet or on your lap. Bus riders must be able to independently handle/carry your belongings and purchases on and off the bus as the bus drivers are not permitted to handle your personal items and must remain within 3 feet of the bus at all times.

**ADA ACCESSIBILITY** Service animals are welcome on the Senior Center Bus if you travel with a service animal. Pets up to twenty pounds may be transported in carriers designed for that purpose. The Bus Drivers cannot help passengers carry pets. Senior Center busses accommodate all wheelchairs, scooters or other mobility devices up to the maximum physical dimensions and constraints of the bus. Drivers are trained to safely operate wheelchair lifts and secure mobility devices on the bus. Scooter users are asked to transfer to a seat after boarding. Most scooters cannot be tied down as securely as a standard wheelchair and are not designed for use on a moving vehicle. Other mobility devices such as walkers and canes are accommodated and must be appropriately secured. Passengers that have trouble with steps may use the wheelchair lift by request. Respirators and portable oxygen are permitted aboard the bus and must be secured by rider.

### WHEELS PROGRAM OF GREATER NEW MILFORD

The Wheels Program is a volunteer organization that provides transportation to seniors and individuals with disabilities to non-emergency medical, dental, and physical therapy appointments. Those under 60 years of age must be ADA-certified. Transportation is provided on a first come, first serve basis. Located on the lower level of the Senior Center, the Wheels Office is open Monday - Thursday, 9:00 AM - 12:00 PM and can be reached at (860) 354-6012 or at [www.wheelsofnewmilford.org](http://www.wheelsofnewmilford.org). Vehicle operating hours are Monday - Thursday, 8:00 AM - 4:00 PM

### SUGGESTED DONATION IS \$1.00 PER ONE-WAY RIDE

Senior Center Bus riders must present their MySeniorCenter Card upon entering the bus and bus riders must have independently mobility. If you need assistance, aides and companions (>18 years old) are welcome to ride with you free of charge, but you must indicate that there will be an additional passenger with you at time of scheduling.

### MASKS STILL ENCOURAGED

The health and safety of our riders and drivers are of utmost importance. Riders are still recommended to wear a face mask/covering that covers both the nose and mouth upon entering, exiting, and for the duration of the bus ride. Please be mindful of social distancing and proper hygiene practices when touching shared surfaces.

For information regarding Title VI, please refer to [www.newmilford.org](http://www.newmilford.org):  
Departments —> Senior Center



**ARE YOU REACHING THE MEMBERS IN YOUR COMMUNITY?**

To advertise here visit [Ipcommunities.com/adcreator](http://Ipcommunities.com/adcreator)

## HANDIWORK CIRCLE

**Mondays, 10:00 AM**

Meeting every week throughout the year to knit and crochet, all are welcome to work on their own personal pieces or ones that will be donated within our community. If you've never knitted or crocheted before, there are plenty of hands willing to assist and yarn donations in excellent condition are always welcome!

## WEEKLY BINGO

**Mondays, 1:00 PM**

Join us for an afternoon of Bingo! Whether across, down, or diagonally it's a- BINGO! For your own comfort, you are welcome to bring in your own supplies as well! Good luck!

## ASK THE ATTORNEY— ROUNDTABLE DISCUSSION

**Tuesday, November 19th, 9:30 AM**

Do you have an elder law concern? This free informational service is offered by local elder law attorneys in a roundtable discussion format to discuss any elder law issue that might be of interest such as estate planning, living wills, transfer of assets, Medicare, and Medicaid. These are *informational discussions* only; no legal advice is offered. Pre-registration is required, please connect with the Center to sign up.



## ¡APRENDA ESPAÑOL CON NOSOTROS! SPANISH CLASS

**Tuesdays, 10:30 AM**

¡Hola, mis amigos! Hello my friends! Have you ever wanted to learn to speak Spanish? Well, now is your opportunity to learn! Join Señora Nora Tigner who will be providing an introductory Spanish class, right here at the Center! Together we will learn the basics of the language and explore the culture. To sign up, please connect with the Center.

## SCRABBLE Tuesdays, 12:30 PM



Scrabble is a board-and-tile game in which two to four players compete in forming words with lettered tiles interlocked like words in a crossword puzzle.

## QUILT CIRCLE Tuesdays, 1:00 PM

Calling all quilters! Work on your individual pieces or join in on a group project. We have fabric, thread, quilting tools and sewing machines and quilting material donations in excellent condition are always welcome and appreciated.



## MAHJONG

**Tuesdays, 12:30 PM (Beginners)**

**Wednesdays, 12:30 PM (Experienced)**

Mahjong is a game of both skill and luck that originated in China many centuries ago. Tiles are shuffled, die are cast, and rituals involving the allocation of tiles and then the exchange of tiles begin. All levels welcome!



## LIBRARY BOOK EXCHANGE

**Wednesday, Nov. 6th, 11:00 AM**



At the beginning of the month, a volunteer from the New Milford Library comes to the Center with a new selection of books for you to "check-out". When you are done with your book, either bring it back the following month when the library volunteer is here or drop them off with a staff member at any time.

## BRIDGE CLUB

**Wednesdays, 1:00 PM**

Join in on the fun, but note that this is an advanced group and prior knowledge of play is required.



## BRIDGE 101

**Monday's 1:30 PM**

Learn to play Bridge! Our fabulous volunteers will teach you the in's and out's of this classic game. Connect with the Center to sign up.



## MIDWEEK MATINEE

**Wednesdays, 12:45 PM**

Join us as we turn the Grand Room into a Movie Theater! Upcoming movies are on display by the Sign-in Computer or connect with the Senior Center to find out what'll be playing on the big screen!



## MONTHLY BIRTHDAY CELEBRATION

**Tuesday, November 19th, 12:00 PM**

Come celebrate our Nov celebrants with all of us at the Senior Center! Music and entertainment throughout lunch will be provided by pianist, Brian Horberg and birthday cupcakes are sponsored from our friends at the Commons in Newtown. Connect with the Senior Center to sign up and Happy Birthday to all!



## WE GOT GAME CLUB

**Fridays, 10:00 AM**

Let's get together and play some games — Card games, dominoes, board games, and more! Have a game you want to play? Bring it along. Connect with the Senior Center to sign up and join in on the fun!



## Need to use a Computer?

Check out our fully equipped Computer Lab located on the 2nd Floor available for senior use! See staff for assistance.



## BOCCE BALL

**Weather-Permitting,  
Open Hours**

The bocce court is open and all are welcome to play! For more info, please connect with the Senior Center.



## BOOK DISCUSSIONS

**Friday, November 8th,**

**Thursday, November 21st, and**

**Tuesday, November 26th, 1:00 PM**

We're happy to welcome back our book discussion groups where readers can come together and share their reading experience with three different groups meeting every second Friday, third Thursday, and fourth Tuesday of the month! In partnership with the New Milford Public Library, we have multiple book discussions available throughout the month here at the Center. Books are provided by the library for your convenience. Our discussions are informal but lively, so let's see where the story takes you! Call the Center or the New Milford Library at 860-355-1191 for more information.



## WII BOWLING

**Fridays, 10:00 AM**

Join in the excitement of Wii Bowling, a virtual bowling game that simulates all the movements of bowling minus the heavy ball!



## SENIOR SONGBIRDS SINGING GROUP

**Friday, Nov. 15th, 1:00 PM**

The Senior Songbirds are back and ready to gather around the piano once again. Local pianist, Dan Ringuette, will be join us to tickle the ivories and accompany our singers. Warm up those voices, it's time to SING!



## PLAY POOL

**Monday - Friday,  
Open Hours**

Let's shoot some pool! The pool table is located on the lower level of the Senior Center and available by request. Bring some competition or practice on your own, just give us a call at least one hour prior to your arrival to ensure that the table is available and ready for you to start playing! Pool sticks, balls, and chalk are available or you are welcome to bring in your own equipment Let's see those pool sharks!





### SPECIAL BINGO

**Monday, November 25th,  
1:00 PM**

This Special Bingo is brought to you by our friends at Stone Bridge Center for Health and Rehabilitation. To sign up, please connect with the Senior Center.

### BOCCE BALL FUN

**Tuesdays, 9:30 AM**

Our bocce court at the front of the Senior Center is open for play (weather-permitting!) The goal of the game is to roll your team's bocce balls closer to the pallino--the smaller target ball--than the other team's bocce balls. To sign up, please connect with the Senior Center



### ARTS & CRAFTS: NARCISSUS HOLIDAY CENTERPIECES

**Wednesday,**

**November 20th, 10:00AM**

The *narcissus* is the December birth flower and symbolizes good wishes, faithfulness and respect. Space is limited, connect with the Senior Center to sign up.



### WHAT'S HAPPENING: CURRENT EVENTS AND CONVERSATION

**Thursday,**

**November 14th, 10:30 AM**

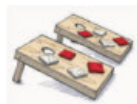
Join us for lively discussions of current events, from local to international. Some may prefer to just listen and learn while others may offer their thoughts, but all must be respectful! To sign up, connect with the Senior Center.



### CHESS CLUB

**Thursdays, 10:00 AM**

Come join other fellow chess players to play one of the world's oldest games! All abilities welcome. Connect with the Senior Center to sign up.



### CORNHOLE

**Mondays, 9:30 AM and  
Thursdays, 1:00 PM**

Join our Silver Corn Stars for a game of cornhole! No prior experience necessary—we'll teach you! To sign up, please connect with the Senior Center and let the games begin!

## PROGRAMS AND ACTIVITIES | 11



### CANASTA

**Fridays, 10:00 AM**

Love canasta or want to learn how to play? Whether you're a pro or a novice, come out to play this card game that combines elements of bridge and rummy. To sign up, please connect with the Senior Center.

### GERMAN CONVERSATIONAL GROUP

**Mondays, 1:00 PM**

*Sprechen sie deutsch?* If you enjoy speaking German and want to join others in informal conversation, come join and practice with us! All levels welcome. Connect with the Senior Center to sign up.



### ONE-ON-ONE TECH HELP

**Appointments Available By Request**

One-on-One Tech Help provides instruction on how to use cell phones, tablets or computers in a personal one to one appointment with our one of tech savvy Senior Center Helping Hands Volunteers. You can also get advice about selecting a new cell phone or computer. One-on-One Tech Help is available the first and third Tuesday each month on by connecting with the Senior Center to make an appointment.

## SUPPORT OUR ADVERTISERS!

*We provide the **highest quality** of medical & surgical eye care.*



*Clearly the Right Choice*

**Formerly Danbury Eye  
Physicians & Surgeons**

69 Sand Pit Road • Danbury, CT  
120 Park Lane, Suite B-203 • New Milford, CT  
166 Waterbury Road, Suite 201 • Prospect, CT

**203-791-2020 | [www.ctyeeye2020.com](http://www.ctyeeye2020.com)**

Complete Eye Exams • Cataract Surgery • LASIK • Corneal Transplants • Glaucoma Treatments  
Retina Surgery • Eye Muscle Surgery • Optical Shop • Emergency Treatment • Hearing Specialist





# Thanksgiving Word Search



L	R	Y	P	I	W	T	V	L	M	S	T	U	F	F	I	N	G	Z	K	H	F	R
D	V	A	R	C	S	T	O	G	E	T	H	E	R	N	N	P	H	R	G	T	E	O
A	F	N	I	K	P	M	U	P	V	F	V	P	C	F	V	L	A	Q	N	F	A	D
V	N	E	E	I	P	A	P	P	L	E	T	F	J	A	B	S	R	V	I	T	S	I
I	O	Y	V	A	R	G	M	G	F	T	H	O	T	L	B	M	V	F	V	R	T	N
O	V	P	S	Q	U	A	S	H	X	E	U	G	V	L	A	Z	E	A	I	A	U	N
Y	E	G	I	S	E	D	A	R	A	P	A	R	R	E	H	G	S	M	G	D	Y	E
D	M	O	J	I	U	E	J	S	K	H	H	T	K	Z	R	V	T	I	S	I	L	R
K	B	B	G	R	E	E	N	B	E	A	N	S	H	E	E	S	A	L	K	T	X	P
K	E	B	E	T	H	A	N	K	F	U	L	Q	B	E	Y	B	H	Y	N	I	F	S
C	R	L	D	T	N	R	O	C	R	A	N	B	E	R	R	I	E	S	A	O	E	O
O	S	E	O	T	A	T	O	P	D	E	S	S	E	L	B	I	F	W	H	N	W	E
R	I	D	V	S	E	V	A	E	L	I	V	G	F	B	V	V	K	I	T	S	G	V
N	U	Z	Y	F	P	V	M	A	Y	F	R	I	E	N	D	S	Z	B	Q	E	T	K
B	O	I	M	P	F	O	O	T	B	A	L	L	J	J	R	N	F	B	K	P	E	I
Y	R	O	L	L	S	O	W	X	I	P	V	H	E	N	O	B	H	S	I	W	J	J

Find the following words in the puzzle. The words are hidden ↑ ↓ ← → and ↘

APPLE

FEATHER

LEFTOVERS

STUFFING

BLESSED

FOOTBALL

NOVEMBER

THANKFUL

CORN

FRIENDS

PARADE

THANKSGIVING

CRANBERRIES

GOBBLE

PIE

TOGETHER

DINNER

GRAVY

POTATOES

TRADITIONS

FALL

GREEN BEANS

PUMPKIN

TURKEY

FAMILY

HARVEST

ROLLS

WISHBONE

FEAST

LEAVES

SQUASH

YAM







## STRENGTH & BALANCE

**Mondays & Thursdays, 11:00 - 11:45 AM**

Join Kerry Swift, our Strength and Balance exercise instructor who teaches a low-impact exercise program that includes strength training with light hand weights, stretchy bands, chair exercises and lots of laughter! The cost of a 4-week session is \$15 to take only the Monday Class or Thursday Class or \$30 to take the class on both Mondays and Thursdays, and payment will confirm your registration. Take a seat and let's get movin'!



## ZUMBA GOLD \*NEW TIME\*

**Mondays, 4:30-5:30 PM**

Join Jasmin Ducusin-Jara, certified Zumba Gold instructor for a class that's perfect for active older adults who are looking for a Zumba® class at a lower-intensity. The class introduces easy-to-follow Zumba® choreography that focuses on balance, range of motion and coordination as well as all the elements of fitness: cardiovascular, muscular conditioning, flexibility and balance. The cost of a 4-week session is \$25. payment will confirm your registration. Let's get the party started!



## DANCIN' THROUGH THE DECADES

**Tuesdays, 11:00 AM**

Join professional dancer and certified personal trainer Matthew Ames as he hits the floor in this exciting new dance workout. Designed to increase range of motion and muscle recruitment, all while dancing' to your favorite golden oldies of yesteryear. No dance experience is required, just a love of music and movement. The cost of a 4-week session is \$25 and payment will confirm your registration. Get ready to boogie!

## EXERCISE CLASSES | 13



**CHAIR YOGA Tuesdays, 10:30 - 11:30 AM**

Join Elaine Donahue, certified Yoga Instructor, for an enriching gentle yoga class where you have a partner on the mat: a chair! Improve balance, strength and flexibility by practicing classic yogic poses while supported by your chair. This class is welcome to all who are striving for increased energy, improved wellness, and an enhanced enthusiasm for life! The cost of a 4-week session is \$25 and payment will confirm your registration. Namaste, friends!

**YOGA Thursdays & Fridays, 9:30 AM**

Join yoga instructor, Kristin Wilkins who brings compassion and a positive approach to her work by helping people maintain a healthy lifestyle! With two class days available, yoga is a not only a type of exercise, but a discipline that includes breath control, simple meditation, and specific bodily postures for health and relaxation. The cost of a 4-week session is \$25 and payment will confirm your registration. "It's not about being good at something. It's about being good to yourself."



**BOOGIE SHOES Wednesdays, 11:00 AM**

Move and groove to classic boogie beats as you target and tone legs and core muscles with funky fresh dance routines with professional dancer and certified personal trainer, Matthew Ames. No experience or dance skill is required. Routines are easy to modify for all fitness levels. The cost of a 4-week session is \$25 and payment will confirm your registration. It's time to get toned to the sounds of the post-disco era, so put on your "Boogie Shoes."

*Serving All Cemeteries and Faiths, Since 1846*

Markers, Monuments, Mausoleums, Bronze Plaques, Inscriptions, Cleaning,  
Pet Markers, Civil, Community and War Memorials, Pre-Need Monuments & More

*Vicky Godfrey*

51 Grove Street, New Milford, CT 06776

39 South Street, Danbury, CT 06810

O: 860-355-8285 F: 860-355-9491

Email: vicky@ctmonumentgroup.com

www.CTMonumentGroup.com



**BATES**  
NEW MILFORD  
MONUMENT  
COMPANY

## ADT-Monitored Home Security

Get 24-Hour Protection  
From a Name You Can Trust

- Burglary • Flood Detection
- Fire Safety • Carbon Monoxide



ADT Authorized Provider

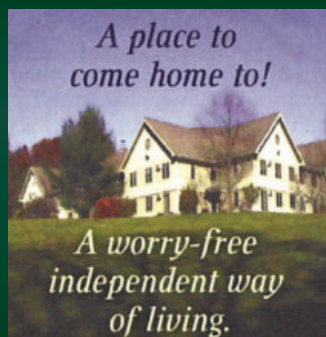
SafeStreets

833-287-3502

## Chestnut Grove

*Congregate Living for Retirement Years*

- Dinner served daily
- Emergency call system
- Weekly housekeeping
- Full program of activities
  - Library
  - Local Transportation
- On-site, live-in superintendent
- Minutes from New Milford Hospital



*A place to  
come home to!*

*A worry-free  
independent way  
of living.*

200 Chestnut Grove | New Milford, CT 06776  
860-350-9950 | lgaudenzi@demarcomc.com

## IF YOU LIVE ALONE

**MDMedAlert!**™

STARTING AT

**\$19<sup>95</sup>** /mo.

**At HOME and AWAY!**

- ✓ Ambulance ✓ Police ✓ Family
  - ✓ GPS & Fall Alert
- "STAY SAFE in the HOME YOU LOVE!" **CALL NOW!**



**800.809.3570**

md-medalert.com



## One Campus, One Decision.

Our complete continuum of care allows us to meet all of your loved one's needs.

Independent & Assisted Living,  
Nursing and Short Term Rehabilitation,  
multiple Memory and Specialty Care Options.  
On campus YMCA, Physical Therapy and Pharmacy.



Schedule a consultation today! Call us at 860.824.2625  
or check us out online at [www.geercares.org](http://www.geercares.org)

77 - 99 S. Canaan Rd. Canaan, CT 06018 • [www.geercares.org](http://www.geercares.org) • 860.824.2600





# ELDERLY NUTRITION PROGRAM

## LUNCH SERVICE

CONGREGATE MEALS SERVED AT THE NEW MILFORD SENIOR CENTER

MONDAY - THURSDAY, 12:00 PM

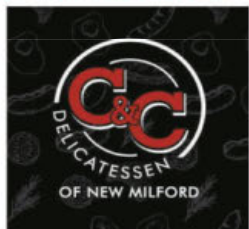
SUGGESTED DONATION: \$5.00

PLEASE SIGN UP BY CONNECTING WITH THE SENIOR CENTER AT LEAST 3 DAYS IN ADVANCE

### NOVEMBER 2024 MENU

MONDAY	TUESDAY	WEDNESDAY	THURSDAY
4 <ul style="list-style-type: none"> <li>Lentil Soup</li> <li>Grilled Cheese Sandwich</li> <li>Low-Fat Milk</li> <li>Fruit Juice</li> <li>Dessert</li> </ul>	5 <b>ELECTION DAY</b> No Lunch Service Onsite at the Senior Center this day  Senior Rate Lunch available for purchase at C & C Delicatessen at 40 Danbury Road by presenting your New Milford Senior Center Card Tag for lunch this day	6 <ul style="list-style-type: none"> <li>Pork Loin and Gravy</li> <li>Mashed Potatoes</li> <li>Mixed Vegetables</li> <li>Low-Fat Milk</li> <li>Fruit Juice</li> <li>Dessert</li> </ul>	7 <ul style="list-style-type: none"> <li>Baked Salmon</li> <li>White Rice</li> <li>Mixed Vegetables</li> <li>Low-Fat Milk</li> <li>Fruit Juice</li> <li>Dessert</li> </ul>
11 <b>VETERAN'S DAY</b> Senior Center Closed	12 <ul style="list-style-type: none"> <li>Chicken Francaise</li> <li>Vegetable Rice</li> <li>Salad</li> <li>Low-Fat Milk</li> <li>Fruit Juice</li> <li>Dessert</li> </ul>	13 <ul style="list-style-type: none"> <li>Chicken Salad</li> <li>White Bread</li> <li>Chips</li> <li>Low-Fat Milk</li> <li>Fruit Juice</li> <li>Dessert</li> </ul>	14 <ul style="list-style-type: none"> <li>Roast Pork Shoulder</li> <li>Yellow Rice</li> <li>Vegetables</li> <li>Low-Fat Milk</li> <li>Fruit Juice</li> <li>Dessert</li> </ul>
18 <ul style="list-style-type: none"> <li>Chicken Alfredo</li> <li>Pasta</li> <li>Steamed Broccoli</li> <li>Low-Fat Milk</li> <li>Fruit Juice</li> <li>Dessert</li> </ul>	19 <b>*Happy November Birthdays*</b> <ul style="list-style-type: none"> <li>Quinoa Garden Soup</li> <li>Crackers</li> <li>Low-Fat Milk</li> <li>Fruit Juice</li> <li>Celebratory Cupcake</li> </ul>	20 <ul style="list-style-type: none"> <li>Beef Stew</li> <li>Egg Noodles</li> <li>Vegetables</li> <li>Low-Fat Milk</li> <li>Fruit Juice</li> <li>Dessert</li> </ul>	*Thanksgiving Special* 21 <ul style="list-style-type: none"> <li>Turkey</li> <li>Mashed Potatoes</li> <li>Gravy</li> <li>Steamed Corn</li> <li>Low-Fat Milk</li> <li>Fruit Juice</li> <li>Dessert</li> </ul>
25 <ul style="list-style-type: none"> <li>Chicken and Beef Empanadas</li> <li>Coleslaw</li> <li>Low-Fat Milk</li> <li>Fruit Juice</li> <li>Dessert</li> </ul>	26 <ul style="list-style-type: none"> <li>Baked Fish</li> <li>Mashed Potatoes</li> <li>Dinner Roll</li> <li>Low-Fat Milk</li> <li>Fruit Juice</li> <li>Dessert</li> </ul>	27 <ul style="list-style-type: none"> <li>Beef Chili Soup</li> <li>Tortilla Chips</li> <li>Low-Fat Milk</li> <li>Fruit Juice</li> <li>Dessert</li> </ul>	28 <b>THANKSGIVING DAY</b> Senior Center Closed

LUNCH PREPARED BY



ALL MEALS MEET PORTION GUIDELINES

3 Ounces Protein • 1/2 Cup Starch

1/2 Cup Vegetables • 1 Bread

1/2 Cup Fruit or Fruit Juice • 8 Ounces Milk

*Please note that due to product availability, menu items may be subject to substitutions*





**SYNERGY<sup>®</sup>**  
HomeCare

**203-731-2560**  
*Care in your own home.*



**Edward Jones**  
MAKING SENSE OF INVESTING Member SIPC

**Lou Abella**  
Financial Advisor  
2 A Main Street  
New Milford, CT 06776  
Bus. 860-354-4017  
Fax 888-461-8934

[lou.abella@edwardjones.com](mailto:lou.abella@edwardjones.com)  
[edwardjones.com/lou-abella](http://edwardjones.com/lou-abella)



# WE'RE HIRING!

## AD SALES EXECUTIVES



**BE YOURSELF.  
BRING YOUR PASSION.  
WORK WITH PURPOSE.**

- Paid training
- Some travel
- Work-life balance
- Full-Time with benefits
- Serve your community



Contact us at  
[careers@4lpi.com](mailto:careers@4lpi.com) or  
[www.4lpi.com/careers](http://www.4lpi.com/careers)

**POMPERAUG WOODS**

- Independent Living
- Home Assisted Living
- Memory Care
- Skilled Nursing
- Rehabilitative Care
- Respite & Hospice Care

Call **203-935-3735** to schedule a visit!

80 Heritage Road • Southbury, CT 06488  
[PomperaugWoods.com](http://PomperaugWoods.com) Managed by Life Care Services®



## DOES YOUR NONPROFIT ORGANIZATION NEED A NEWSLETTER?

Engaging, ad-supported print and digital newsletters to reach your community.

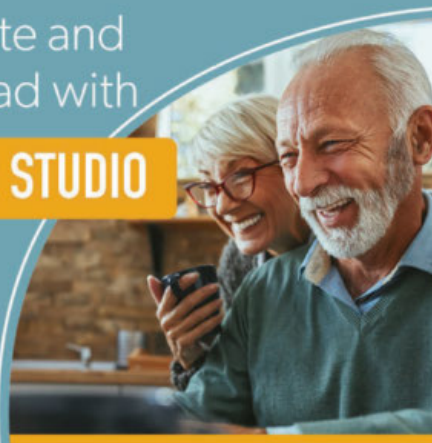
Visit [lpicommunities.com](http://lpicommunities.com)



## Place Your Ad Here and Support our Community!

Instantly create and purchase an ad with

**AD CREATOR STUDIO**



[lpicommunities.com/adcreator](http://lpicommunities.com/adcreator)



## Geron Nursing & Geron Home Care

*Specializing in the Care of the Older Person*  
*The Professional Home Care Solution for your Health!*

**Full Nursing & Personalized Care Services  
With Respect, Dignity & Compassion**

In the comfort of your own home:

**RN's • LPN's**

**Personal Care Attendants**

**42 Main Street | New Milford, CT | (860) 354-7698**



Fully bonded, registered and insured.

[geronhomecare.com](http://geronhomecare.com)



Ad info. 1-800-477-4574 • Publication Support 1-800-888-4574 • [www.lpicommunities.com](http://www.lpicommunities.com)

New Milford Senior Center, New Milford, CT

06-5288

**New Milford Senior Center**  
40 Main Street  
New Milford, CT 06776

**TO OUR READERS:** Our newsletter company, Liturgical Publications, accepts advertising from a number of area businesses and service providers. Please note that although we publish these advertisements, the New Milford Senior Center does not receive any financial benefit from the identification of any product or service provider contained or referred to in any ad, and does not constitute an endorsement, referral, guarantee, or recommendation of or by the Town of New Milford or the New Milford Senior Center.

# Lillis Funeral Home

*Family Owned and Operated Since 1928*  
*"On the Village Green"*

**Christopher M. Milano**  
*Director*

- Pre-Arrangement Consultations
- Complete Burial and Cremation Services
- Title XIX Funeral Trusts
- State Approved Contracts

58 Bridge Street / P.O. Box 959 / New Milford, CT. 06776 • 860-354-4655 • Fax 860-354-0085

**NEVER MISS  
OUR NEWSLETTER!**

**SUBSCRIBE**

Have our newsletter  
emailed to you.



Visit **[www.mycommunityonline.com](http://www.mycommunityonline.com)**