



FLATIRONenergy

BESS Project Introduction: Town of New Milford

December 2, 2025

Confidential & Proprietary



Project Team

Team of local and regional professionals advancing storage development efforts



Charlie McGovern

Director of Development



Chris Groves

Director of Fire Protection & Safety



Sarah Salem

Director of Environmental Justice &
Community Investment

Our Vision

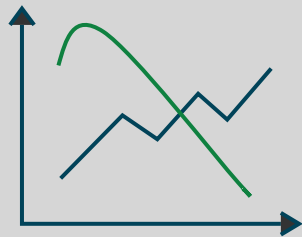
Building the clean energy infrastructure for our future

The Problem

Increasing
Volatility



Decreasing
Reliability



The Solution

Reliable Energy,
Where It's Needed.



Our Mission

Reduce emissions that contribute to climate change and environmental injustice through the development of large-scale urban energy storage projects.



Experienced Team

Community-first development philosophy

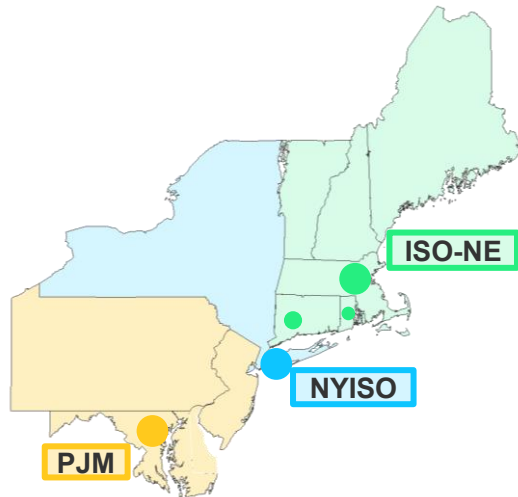
US-based company, strategic focus in Northeast

Proven team successes with strong positive regional impact

- 200-MW project under construction in Uxbridge, MA
- Track record of building over 20 operational energy storage projects
- Developed projects now operating safely / incident-free

Deep understanding of energy storage complexity

- Designed and built projects up to 1 GWh / 500 kV across multiple regions
- Deployed >\$40 billion of capital for development, construction, and operations



State Initiative, Local Benefits

Project benefits to New Milford

1. Economic

- New tax revenue and potential for tax stabilization agreement
- Increased tax base for rate payers
- Avoidance of network upgrade cost sharing, i.e., project pays all costs to interconnect to the grid
- Creation of temporary jobs and boost to local businesses during construction period
- Can tailor local partnerships to meet unique community needs

2. **Resiliency** – Lower the likelihood of blackouts and brownouts by lessening strain on local distribution system during times of high demand

3. **Environmental** – Enables greater renewable energy grid penetration, zero emission use relative to expensive carbon-based capacity technologies (natural gas peaker plants)

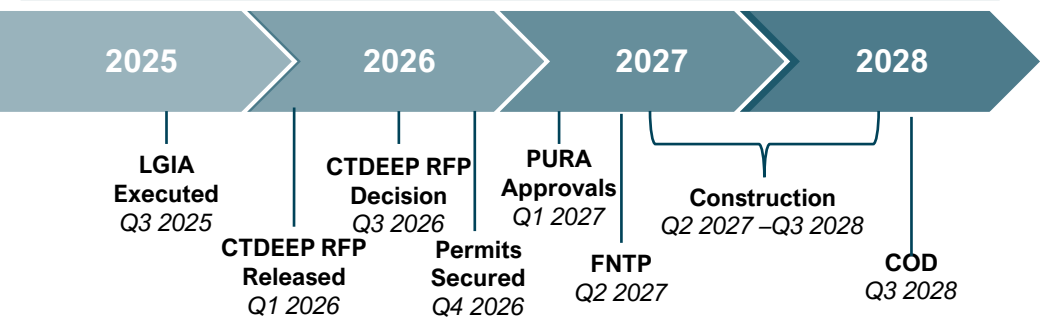
4. **Education** – Opportunities for school programs, scholarships, trainings

Project Overview

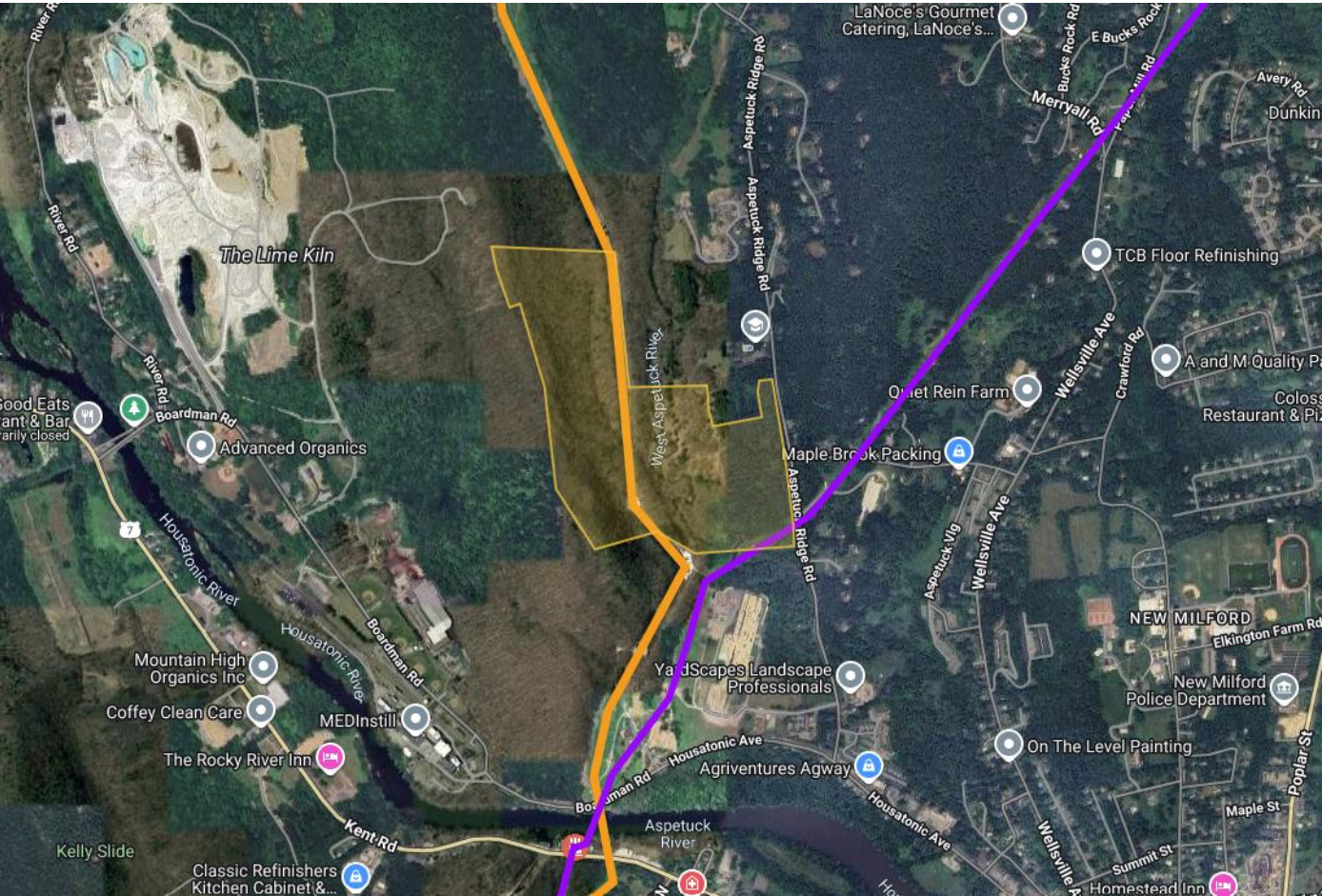
Project Overview

Location	New Milford, CT 2 Timothy Lane
Size	140 MW 560 MWh
FNTP COD	Q2 2027 Q3 2028
Technology	BESS Cell: Lithium Iron Phosphate (LFP) BESS Modules: Tesla, SK, or Hithium BESS Inverter: Tesla, EPC Power, or SMA
IX Type	Line tap onto Eversource’s existing 115 kV Transmission line on site
Site Characteristics	<ul style="list-style-type: none">• ~10-acre development footprint• Site control of 102 acres total• Zoned R-40 (Residential 40)• Design avoids environmental constraints

Project Timeline



Project Location and Interconnection



Proposed Site Layout

LEGEND

SURVEYED PROPERTY BOUNDARY

APPROXIMATE EASEMENT

WETLAND

STORMWATER MANAGEMENT POND

50' WETLAND BUFFER

100' WETLAND BUFFER

FEMA 100-YEAR FLOOD ZONE

PROPOSED GRAVEL ACCESS ROAD

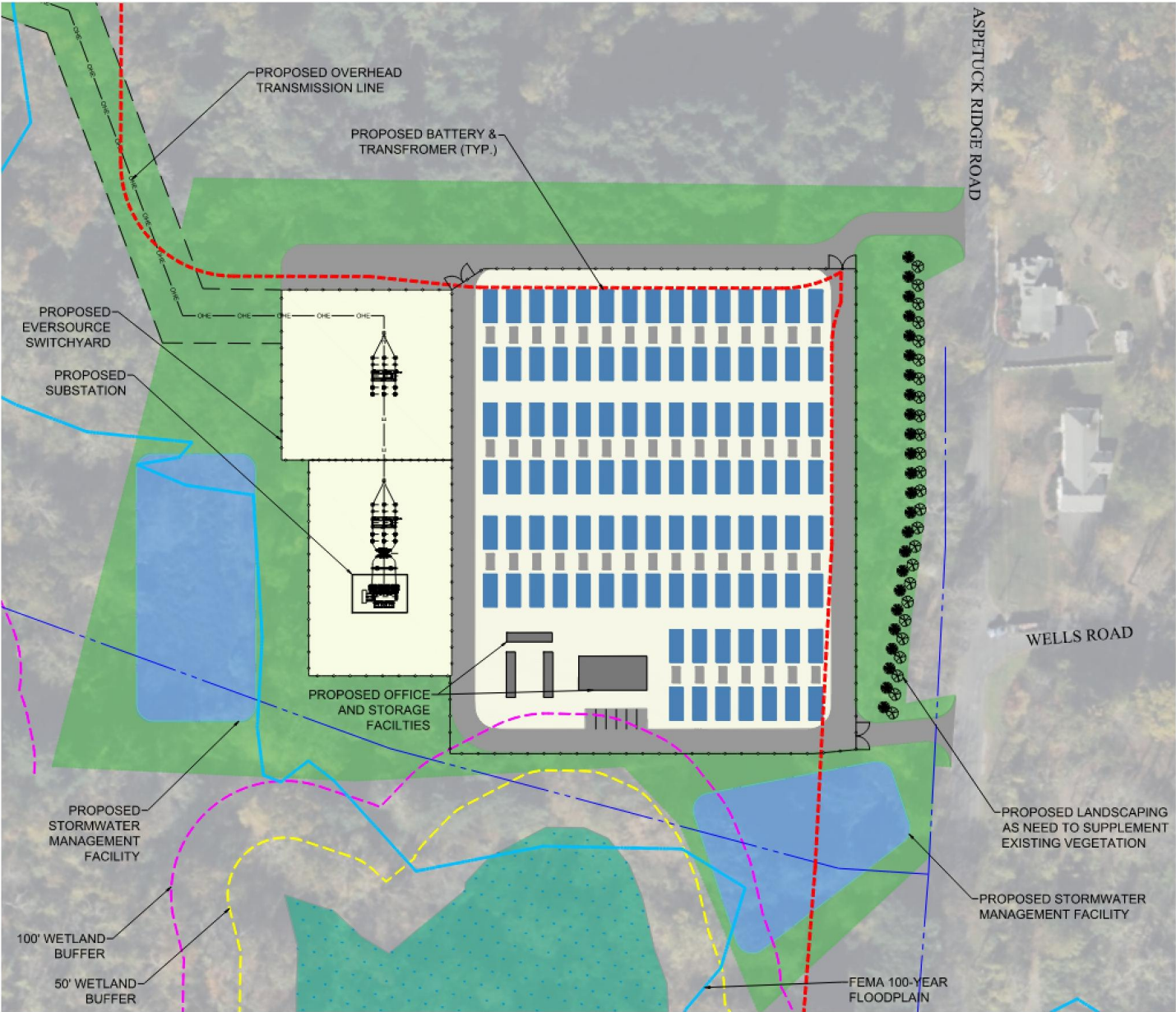
PROPOSED CRUSHED STONE YARD

PROPOSED CHAIN LINK FENCE

PROPOSED OVERHEAD ELECTRIC LINE AND POLES

PROPOSED BATTERY UNIT AND CMA CABINETS

BUILDING SETBACK



Safety as a Core Value

• Layer of Protection Throughout the BESS Lifecycle



Stay Connected

Upcoming Events:

- **January 2026:** Flatiron Energy Community Giving Program Launch
- **Early 2026:** Open House (date/time/location TBD)

Charlie McGovern: Director of Development
cmcgovern@flatiron.energy

Chris Groves: Director of Fire Protection & Safety
cgroves@flatiron.energy

Sarah Salem: Director of Environmental Justice & Community Investment
ssalem@flatiron.energy

Join our contact list



Questions? Contact us at treebeard@flatiron.energy

Questions?

The background of the slide is a solid dark teal color. Overlaid on this background are several broad, diagonal stripes in a lighter shade of teal. These stripes originate from the bottom-left corner and extend towards the top-right corner, creating a sense of movement and depth.