



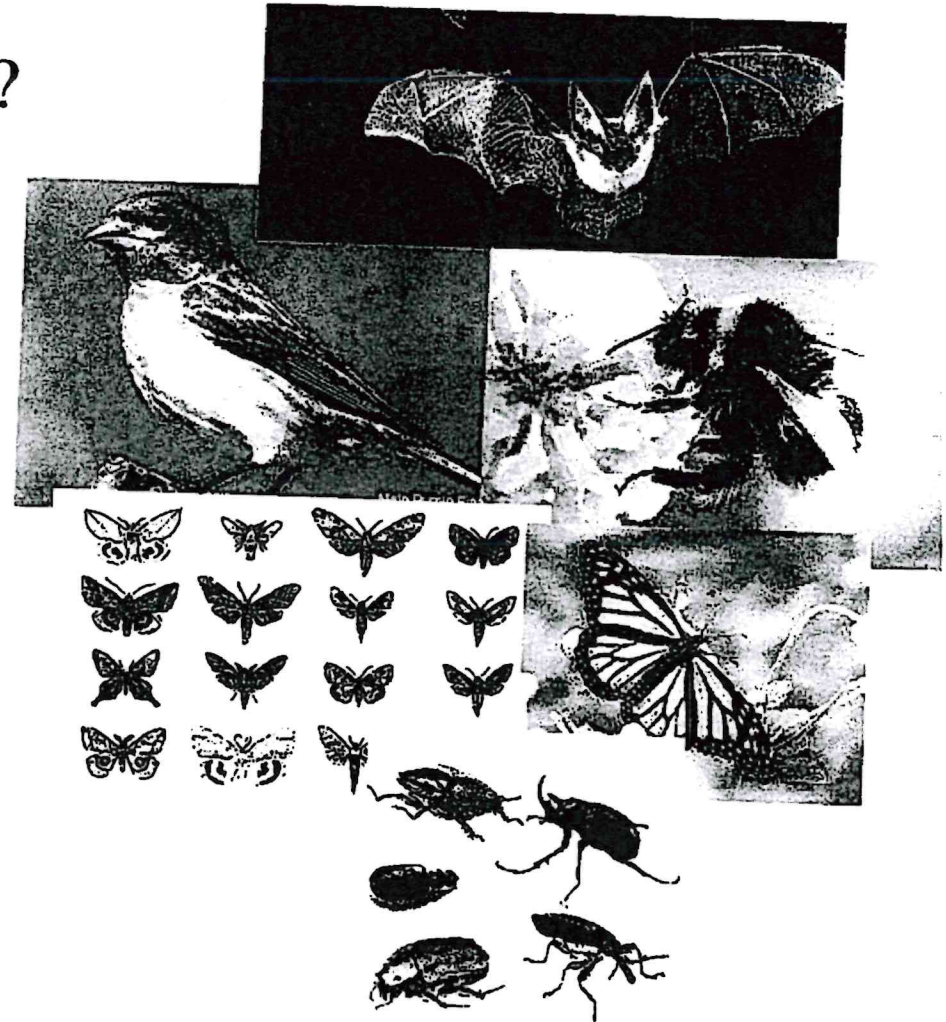
Bee City USA

New Milford, Connecticut



Why are pollinators so important?

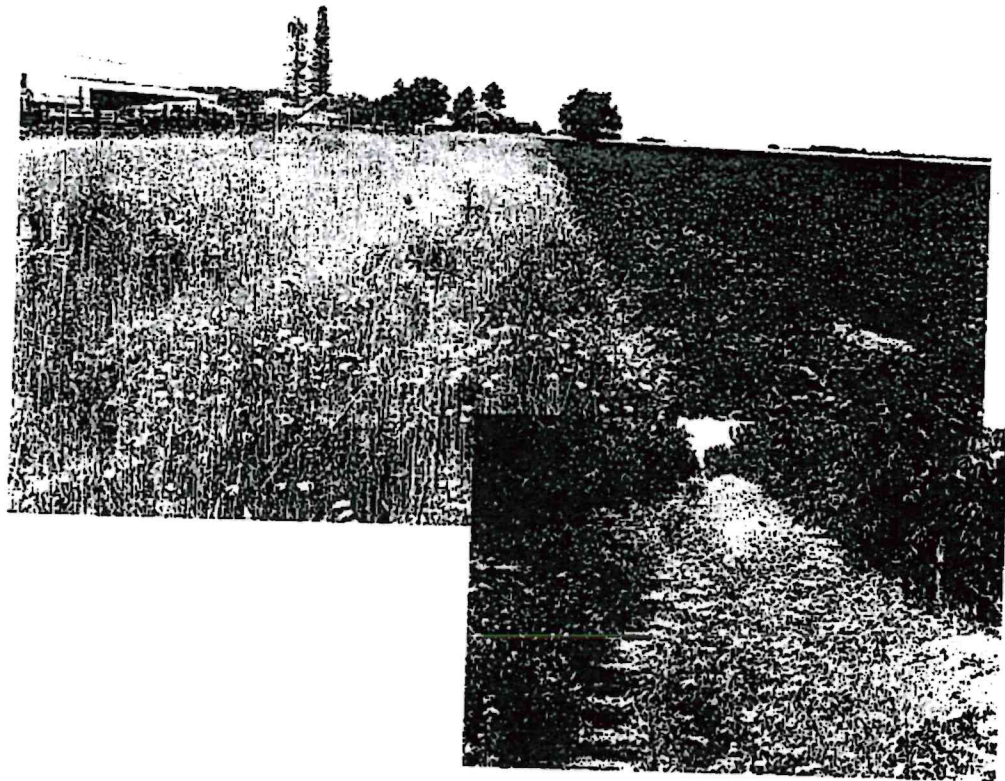
- Responsible for the transfer of pollen, which enhances and sustains vegetation diversity across ecosystems
- Urban development rapidly advancing and enhances environmental disturbances such as habitat loss and fragmentation, insecticides, pesticides, earlier flowering times, degradation of land and air quality, and climate change
- In CT:
 - Over 300 species of bees, as well as birds, bats, moths, butterflies, flies, beetles and more!



What can different types of landscapes do to support local pollinators?

- Farms:

- Manage / reduce pesticides
- Minimize tillage
- Regulate water sources
- Enhance native plants (even for agricultural services like wind breakers and buffers)
- Enhance biodiversity in unused areas



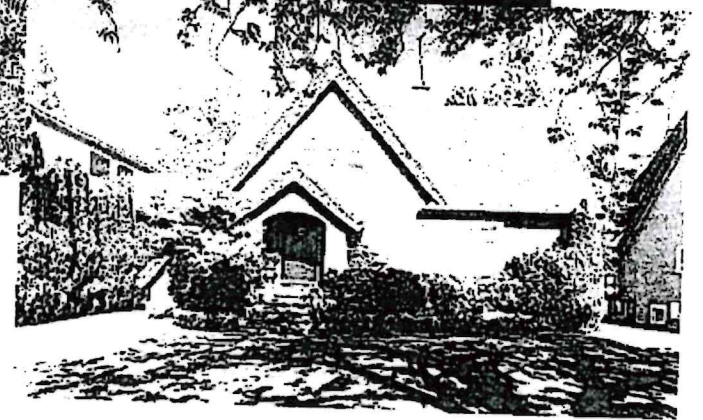
What can different types of landscapes do to support local pollinators?

- **Public lands**
 - Take inventory or research local pollinator abundance
 - Connect areas of vegetation with native plants as corridors
 - Minimize lawn areas
 - Restrict pesticide use
 - Maintain water sources
 - Maintain or remove harmful invasive species



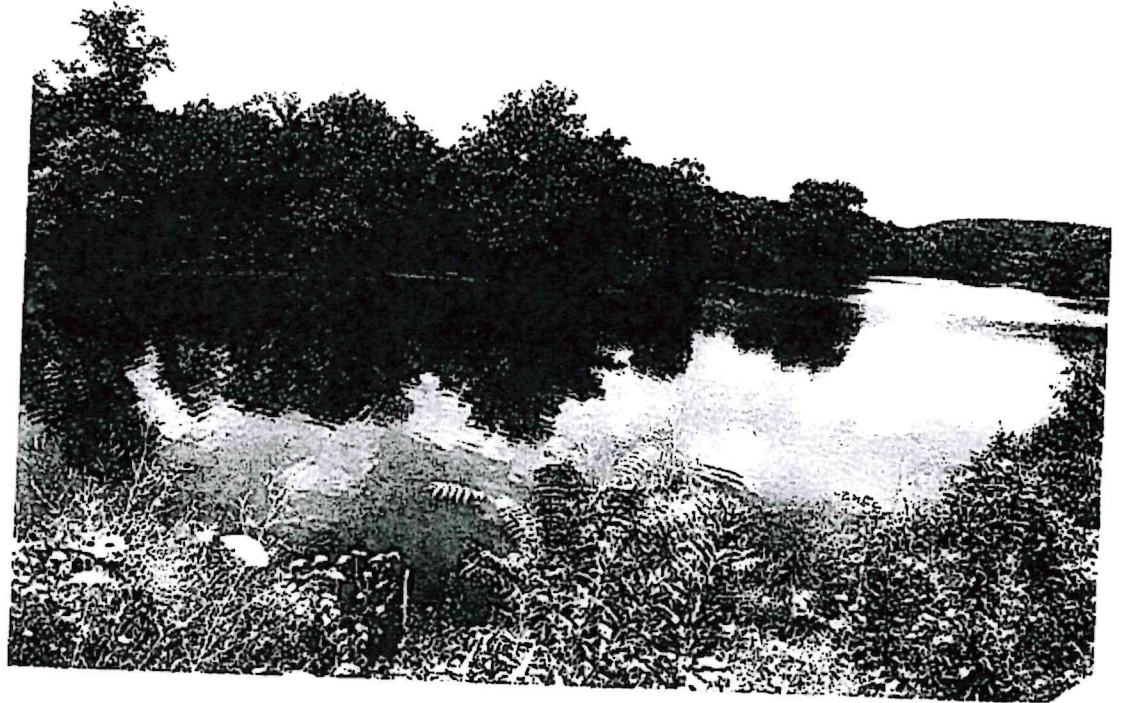
What can different types of landscapes do to support local pollinators?

- Home landscapes
 - Choose to plant variety of plants, including native vegetation
 - Resist manicured lawn
 - Reduce or eliminate pesticides



Why New Milford?

- There is no Bee City in Connecticut - UConn is a Bee Campus
- Sustainability is a priority in this town
 - Sustainable CT Silver Certified
 - Sullivan Farm
 - Native Meadows Preserve
 - New Milford Riverfront Revitalization Committee



Bee City

- Bee City: “A program that recognizes, supports, and encourages pollinator conservation in cities, towns, and counties.”
- Durham- New England’s first Bee City established in 2016!
- Working for UNH Sustainability Institute to make UNH be a Bee Campus
 - Similar to Bee City



Bee City Goals & Requirements

Bee City Commitments:

1. Establish a standing Bee City USA committee to advocate for pollinators.
2. Create and enhance pollinator habitat on public and private land by increasing the abundance of native plants and providing nest sites.
3. Reduce the use of pesticides.
4. Incorporate pollinator-conscious practices into city policies and plans.
5. Host pollinator awareness events.
6. Publicly acknowledge Bee City USA affiliation with signs and an online presence.

Bee City Requirements:

1. Form a committee.
2. Assign facilitation to a local government body or non-profit organization.
3. Designate a local government department as a sponsor.
4. Complete the online application form.
5. Complete the draft Bee City USA resolution.
6. Submit the application and resolution to your local government for approval.
7. Submit your adopted resolution and pay the application fee.



Thank you!

Credit to Julie Bobyock, CT DEEP, Town of New Milford

